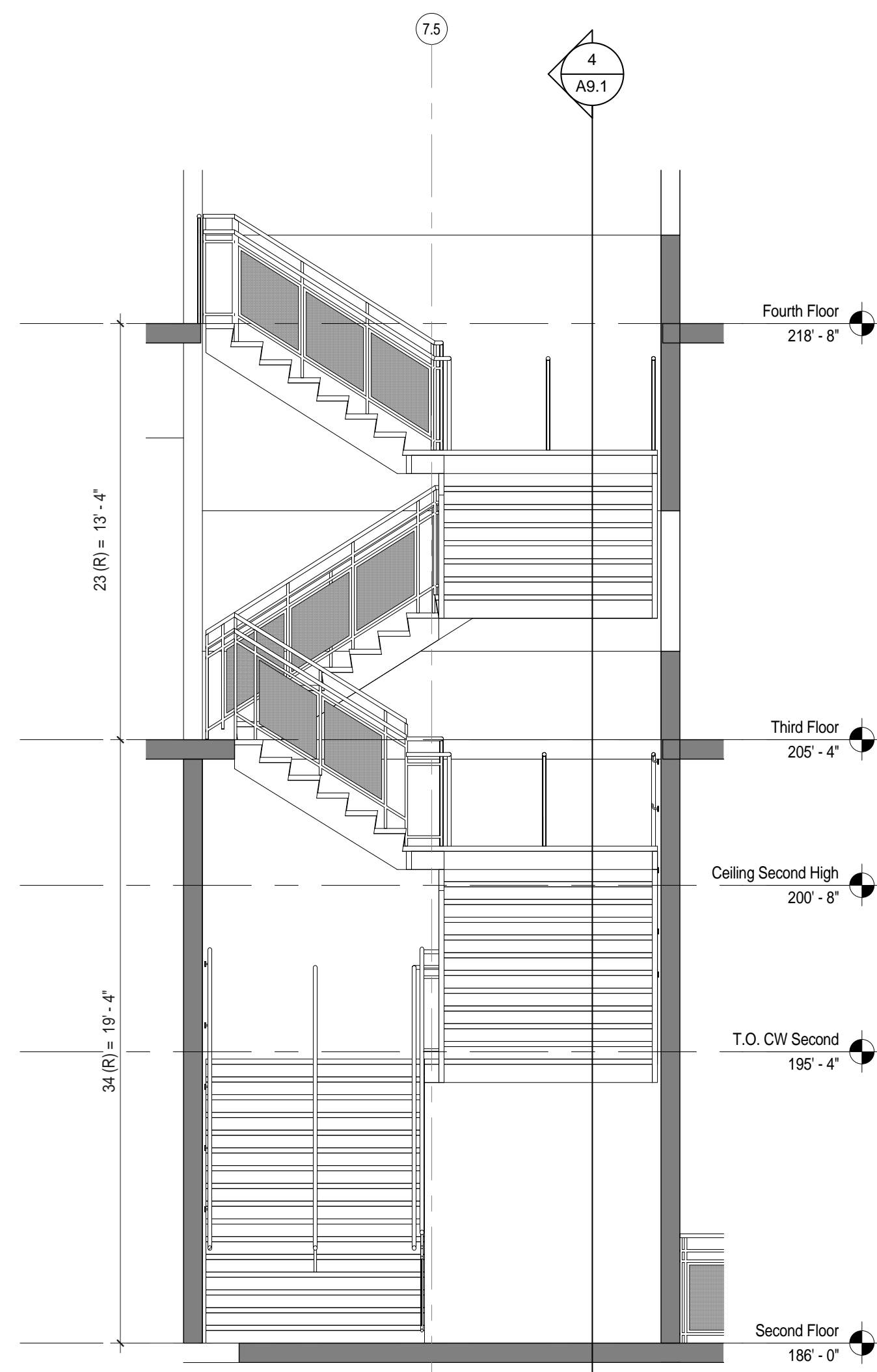
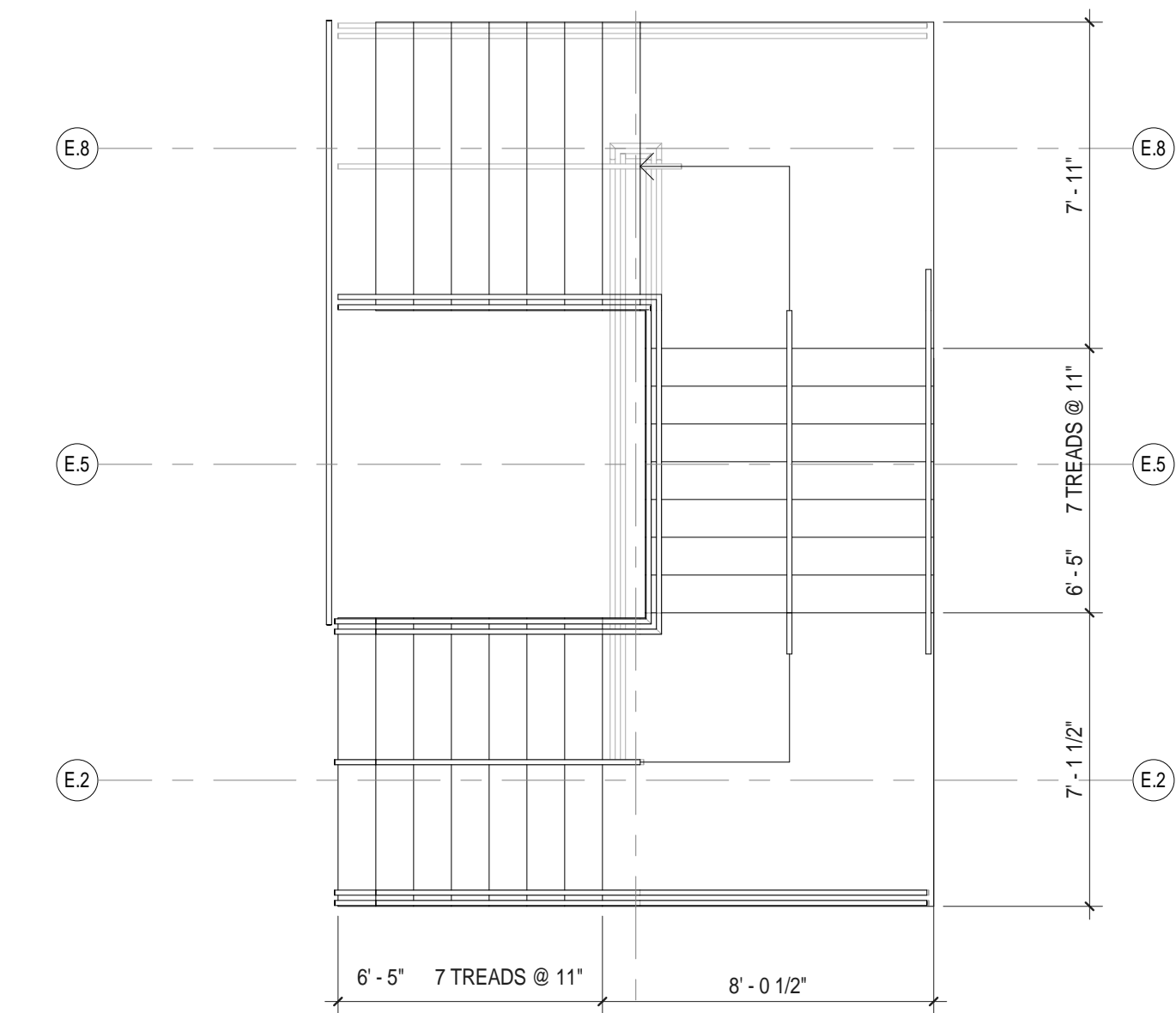


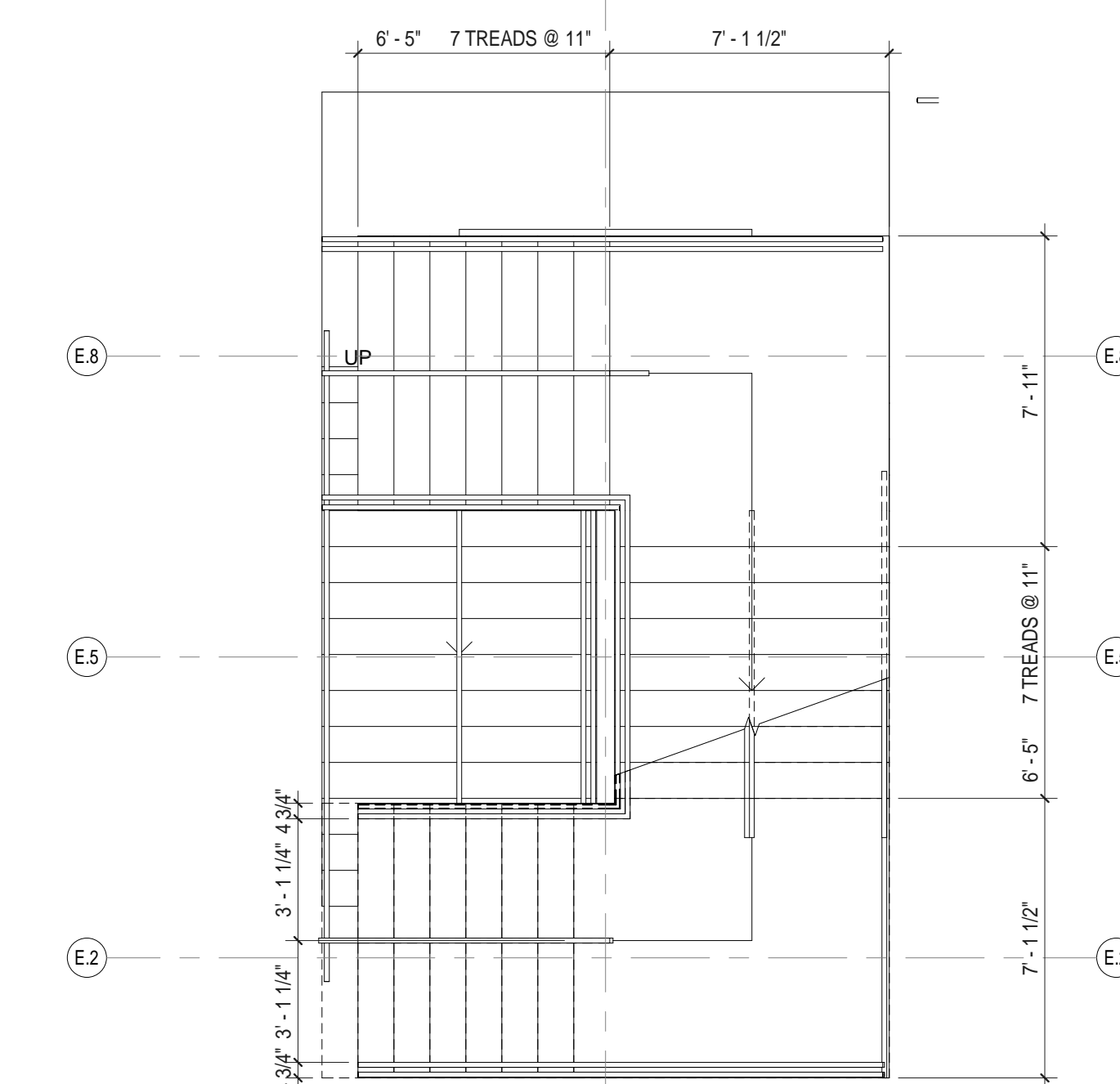
8 Stair A Axon



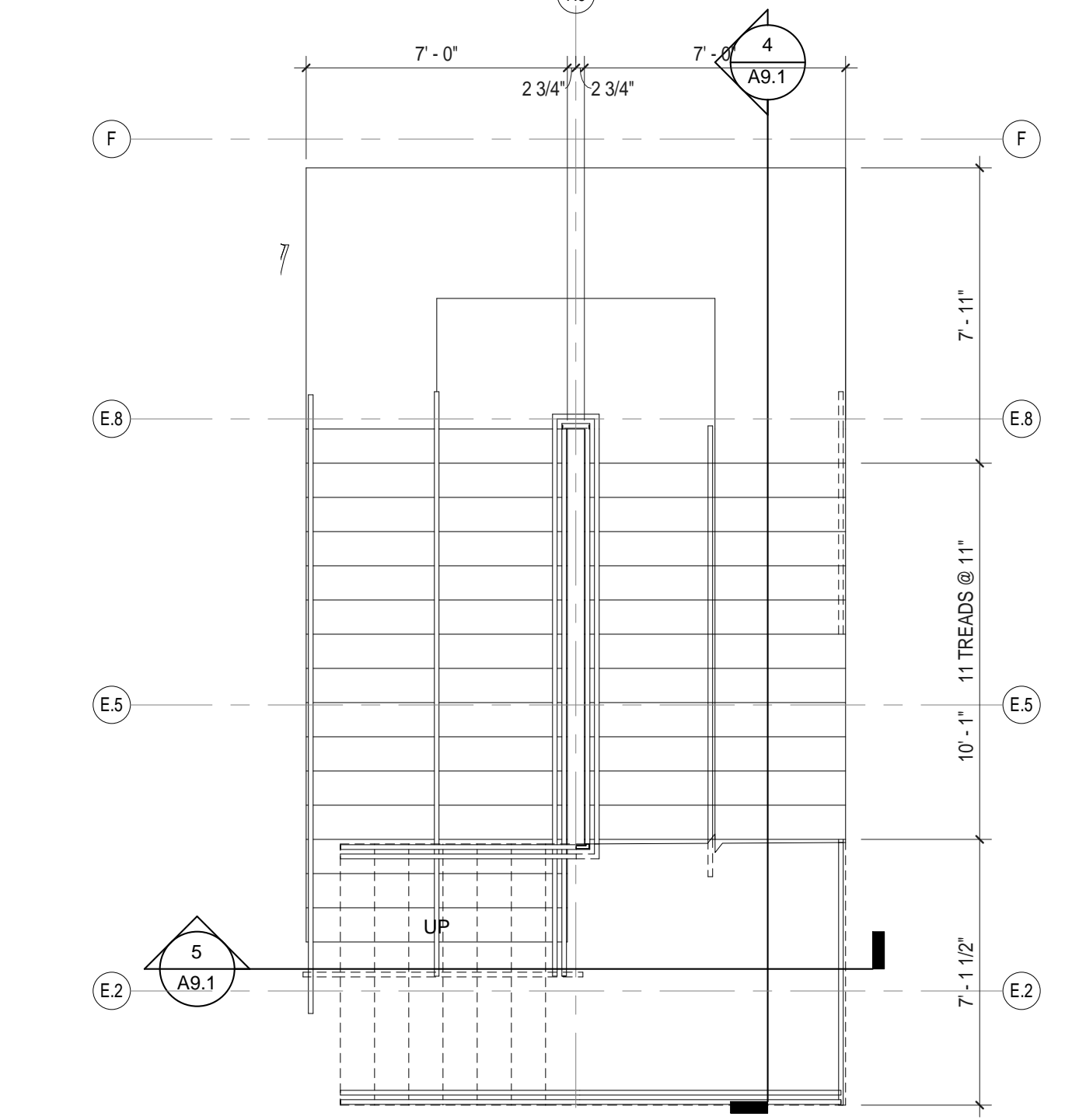
5 Section Through Stair A (Stair B Opposite Hand)
1/4" = 1'-0"



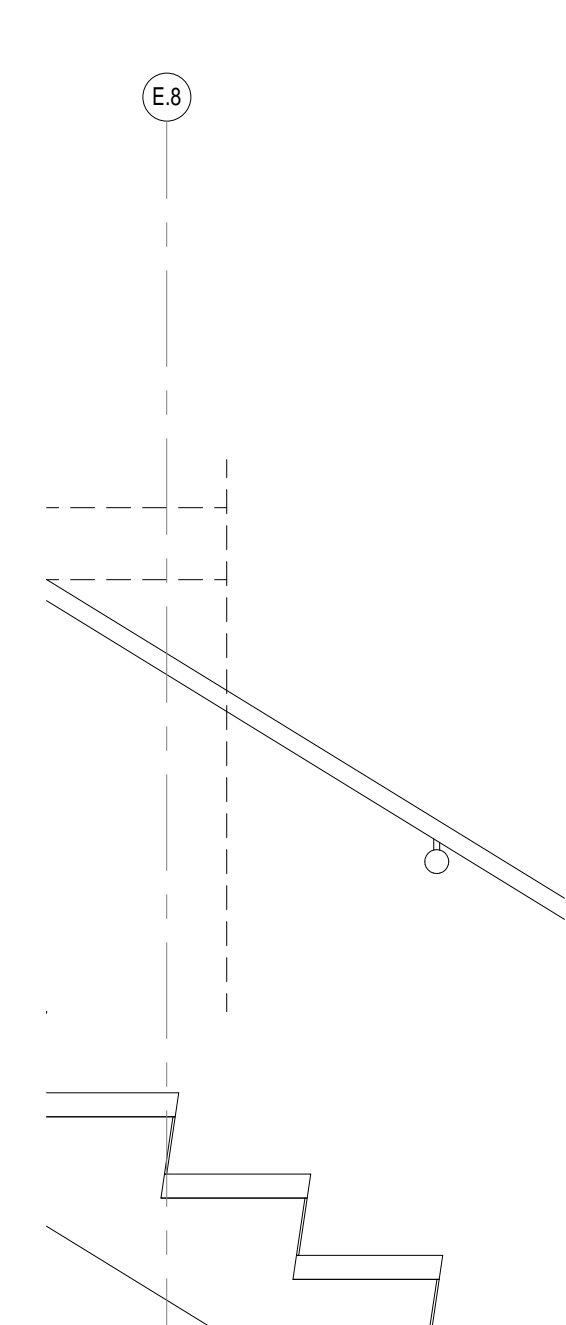
3 Stair A Plan - Third Floor (Stair B Opposite Hand)
1/4" = 1'-0"



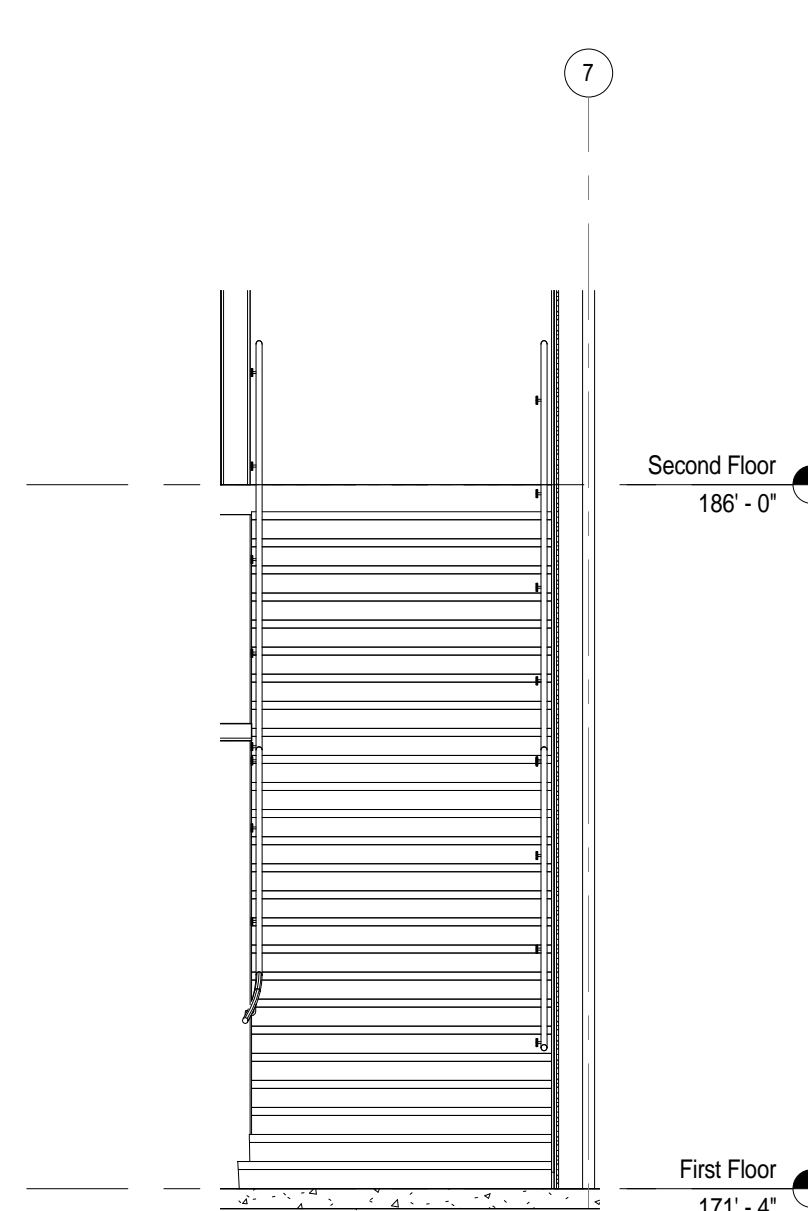
2 Stair A Plan - Second Floor (Stair B Opposite Hand)
1/4" = 1'-0"



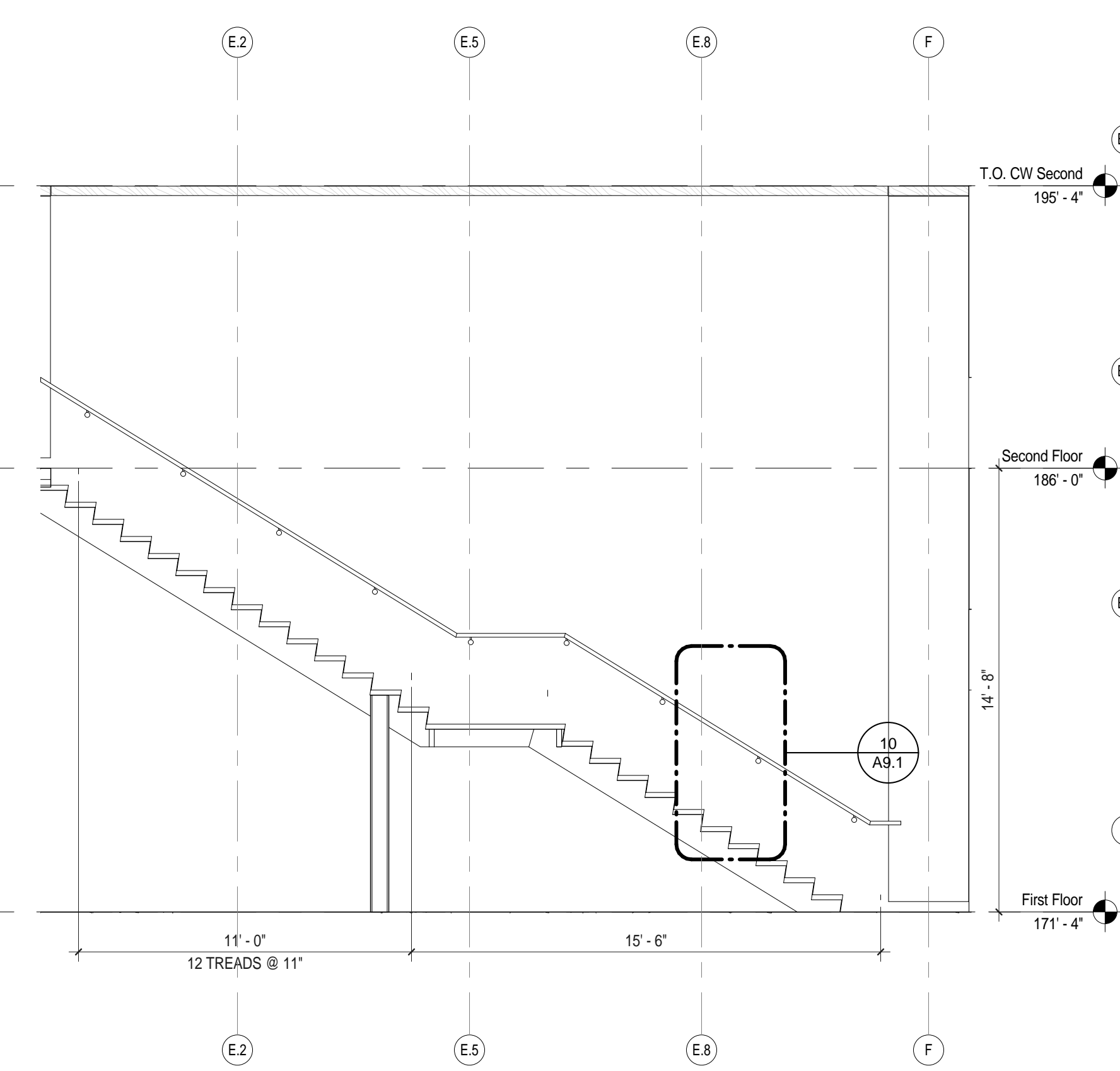
1 Stair A Plan - Main Level (Stair B Opposite Hand)
1/4" = 1'-0"



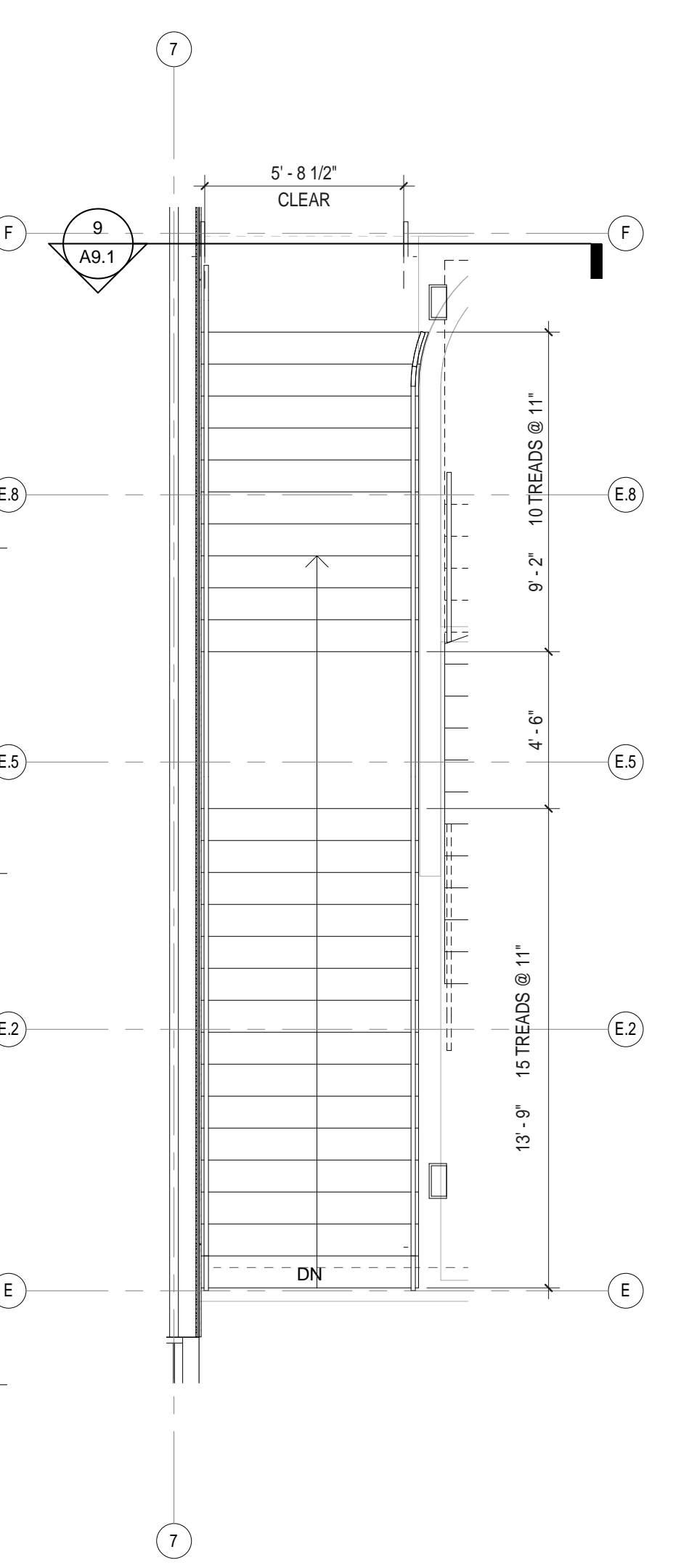
10 Rail Panel Detail
3/4" = 1'-0"



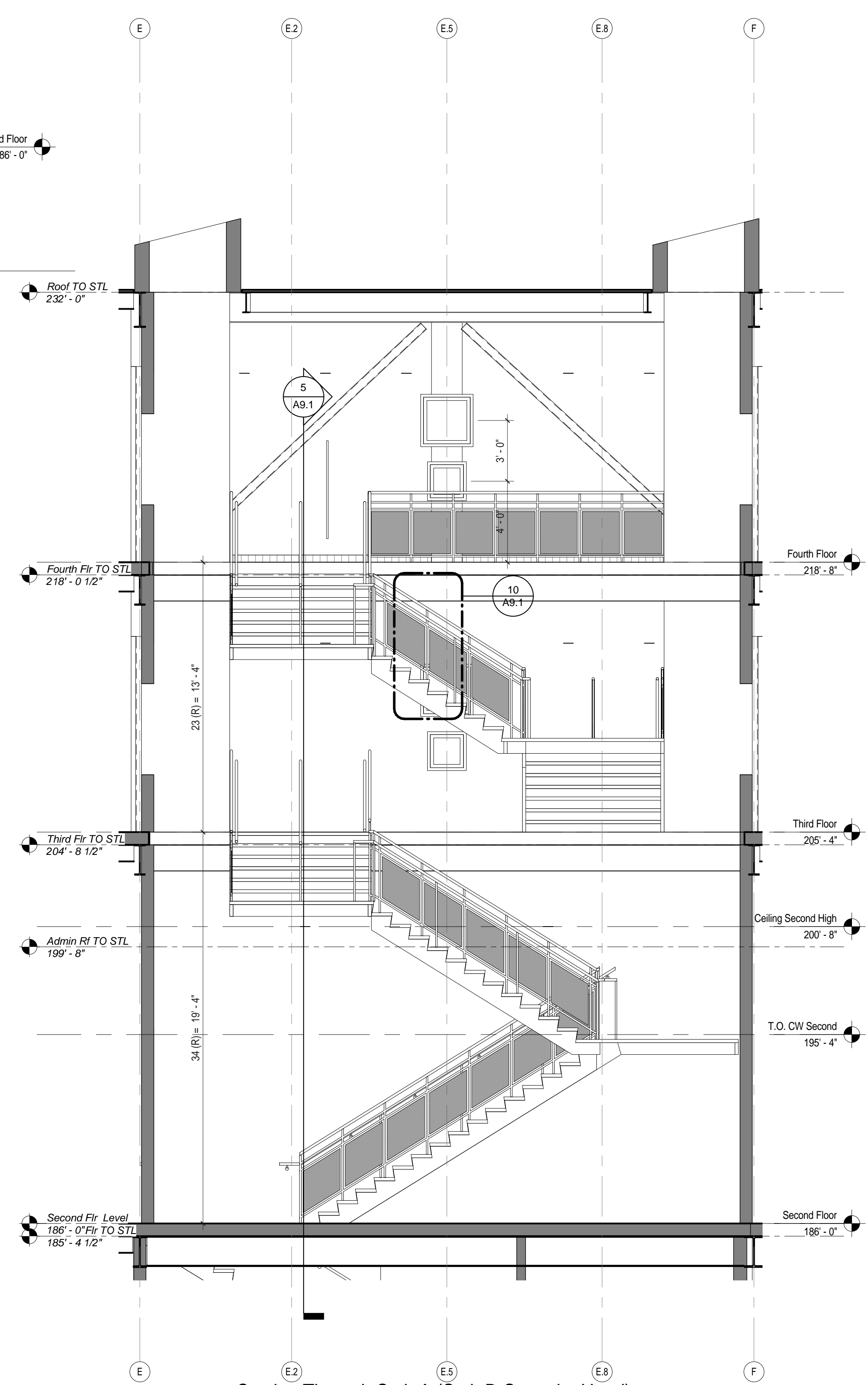
9 Section-Elevation at Central Stair looking South
1/4" = 1'-0"



7 Section Through Central Stair
1/4" = 1'-0"



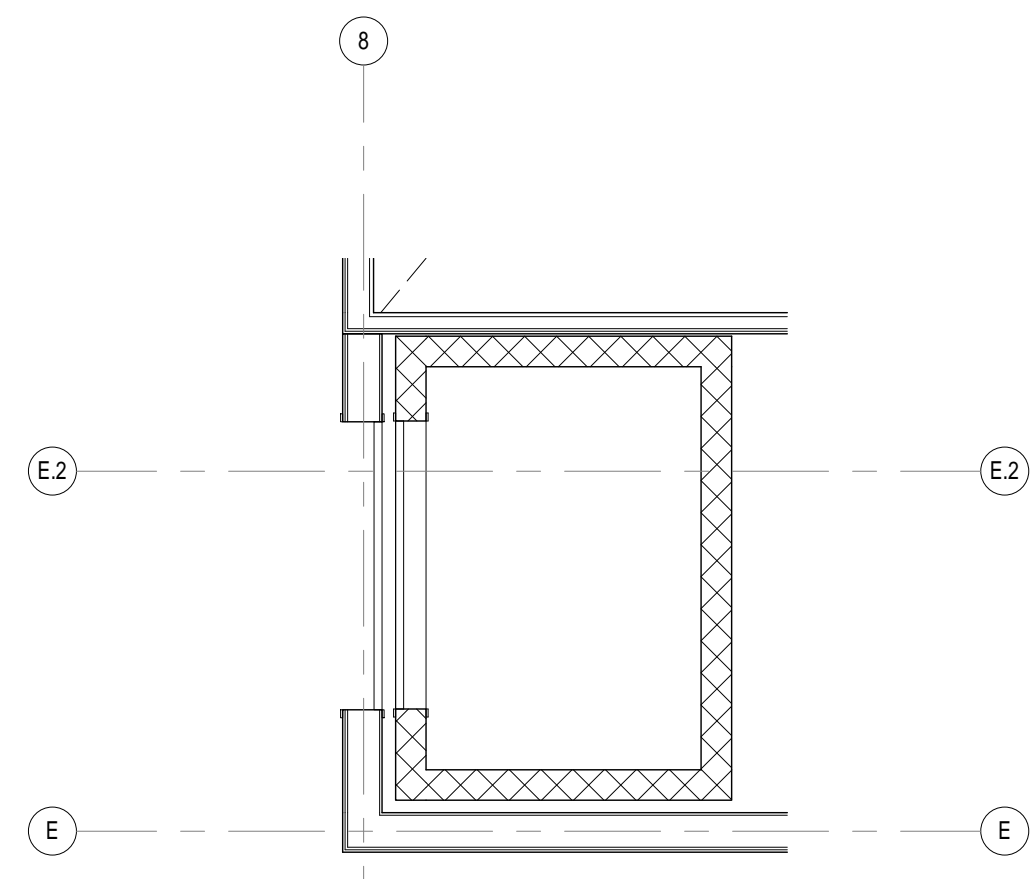
6 Central Stair Plan - Second Floor
1/4" = 1'-0"



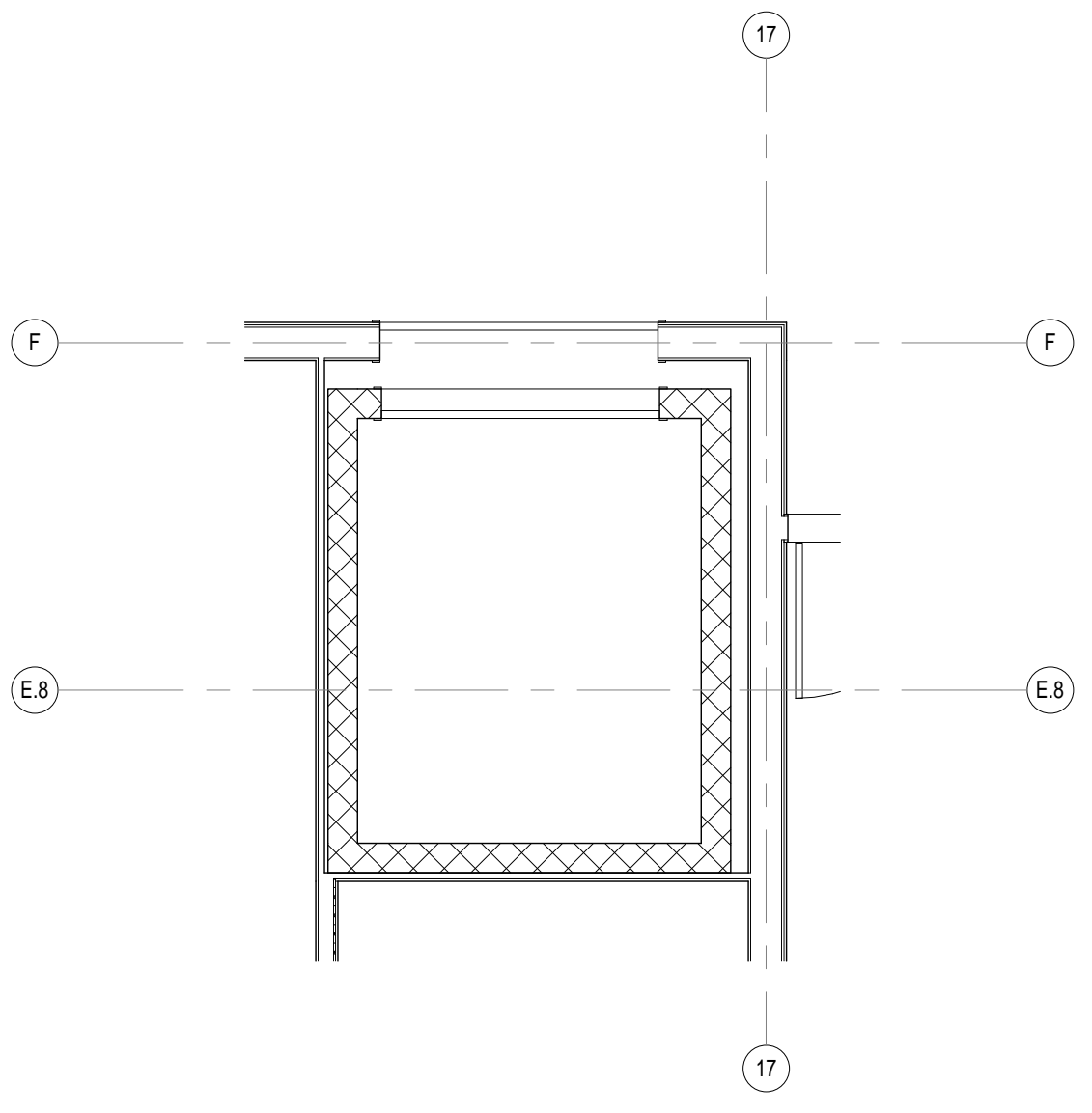
4 Section Through Stair A (Stair B Opposite Hand)
1/4" = 1'-0"

C:\Users\jromer\Documents\Concord-Carlisle\HS_Consulting\Drawings\Stair A Plans and Sections.dwg
Printed: 8/15/2012 11:28:31 AM

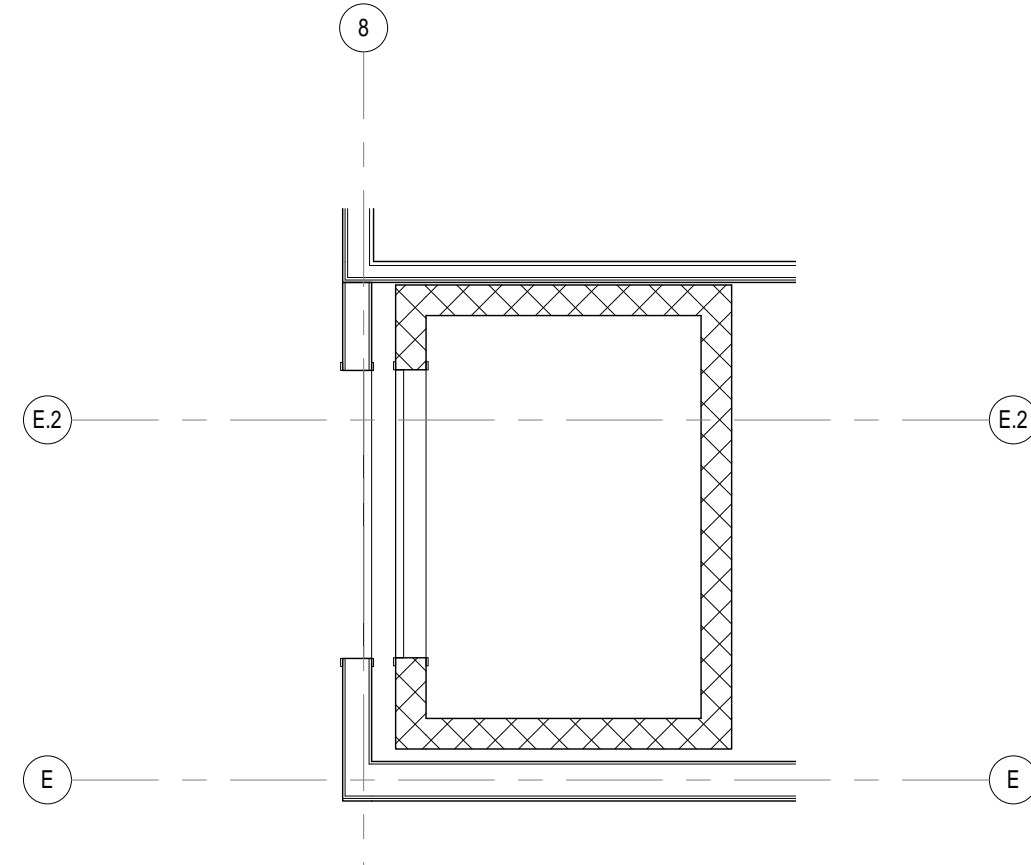
Architect: omr architects inc 543 Massachusetts Ave, West Acton, MA 01720 www.omr-architects.com t: 978.264.0160	Consulting Engineer:	Registration: Design Development Submission	Project Name and Address: Concord-Carlisle Regional High School 500 Walden Street Concord, MA 01742	Issue Submissions: <table border="1"> <thead> <tr> <th>No.</th> <th>Date</th> <th>Description</th> </tr> </thead> <tbody> <tr> <td>1</td> <td>8/15/2012</td> <td>Design Development Submission</td> </tr> </tbody> </table>	No.	Date	Description	1	8/15/2012	Design Development Submission	Title: Stair A Plans and Sections	Project No.: 1102.00 Drawing No.: A9.1
No.	Date	Description										
1	8/15/2012	Design Development Submission										
Date: August 15, 2012			Scale: As indicated		Drawn: JRF Checked: jrf/rs	© omr architects inc						



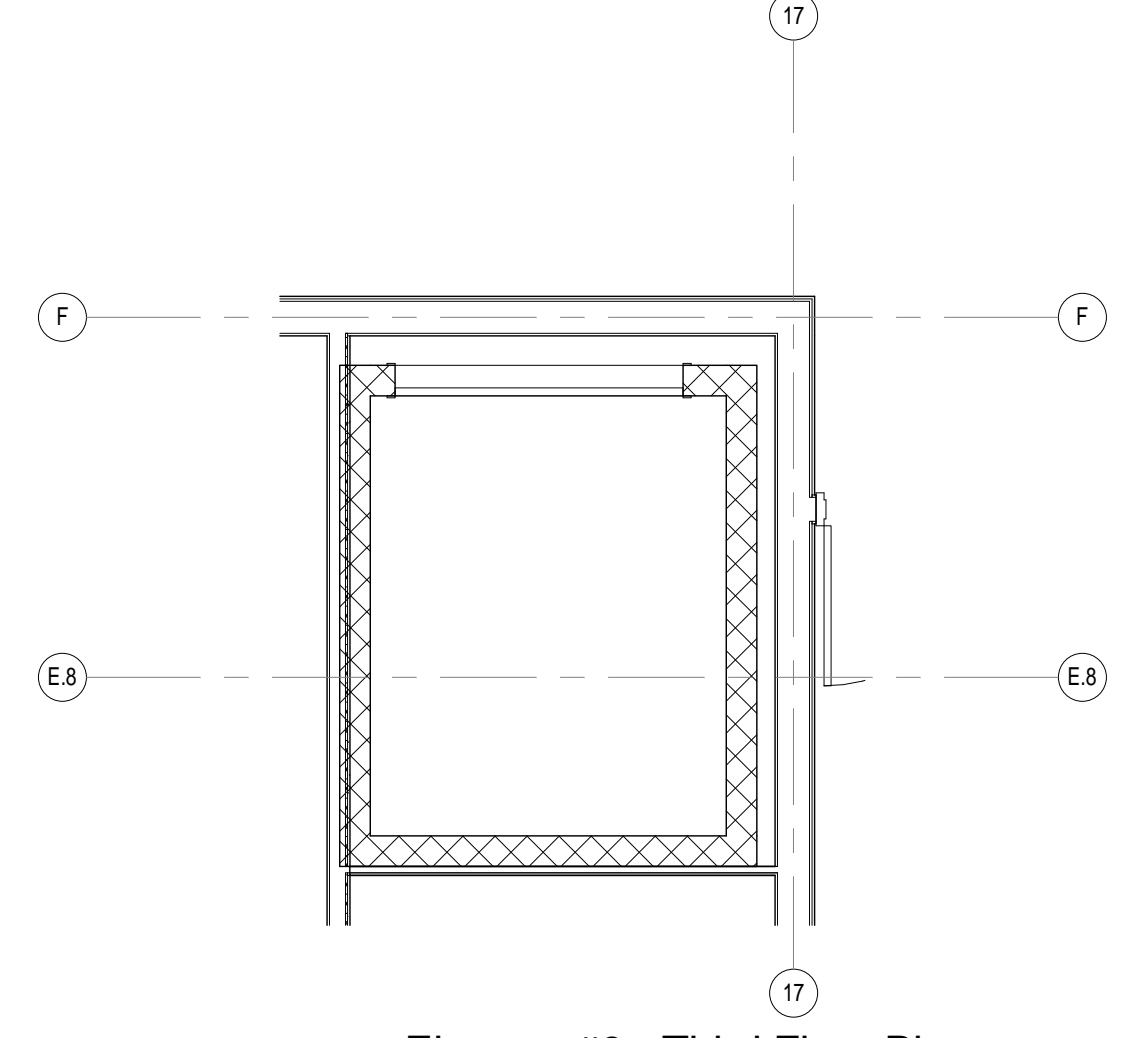
5 Elevator #1 - Fourth Floor Plan
1/4" = 1'-0"



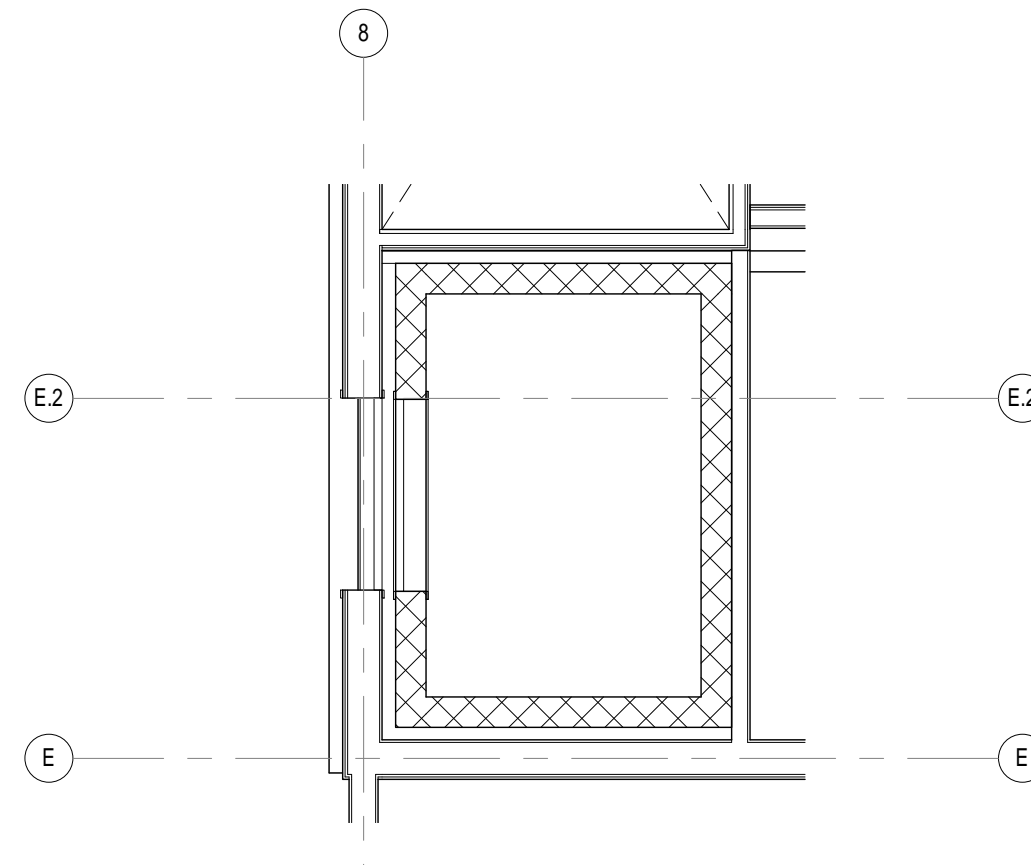
6 Elevator #2 - Fourth Floor Plan
1/4" = 1'-0"



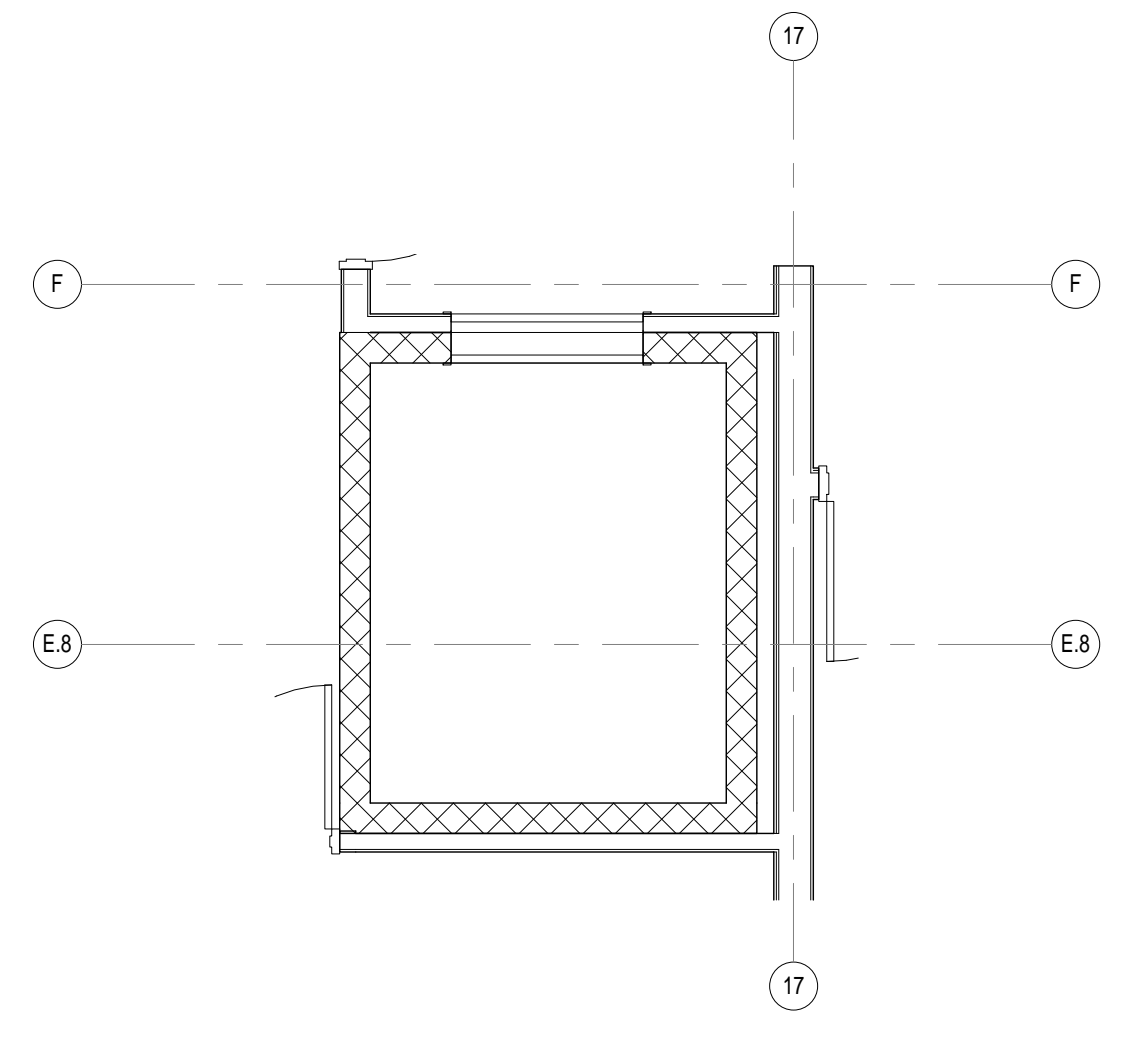
10 Elevator #1 - Third Floor Plan
1/4" = 1'-0"



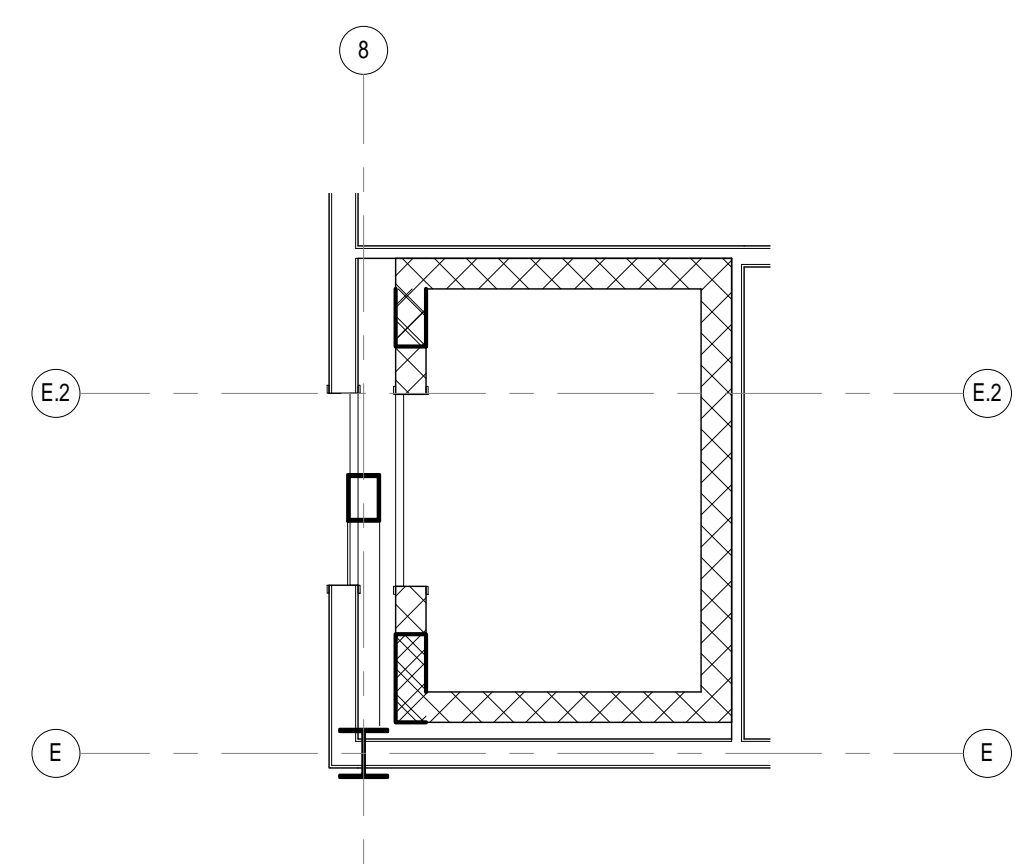
7 Elevator #2 - Third Floor Plan
1/4" = 1'-0"



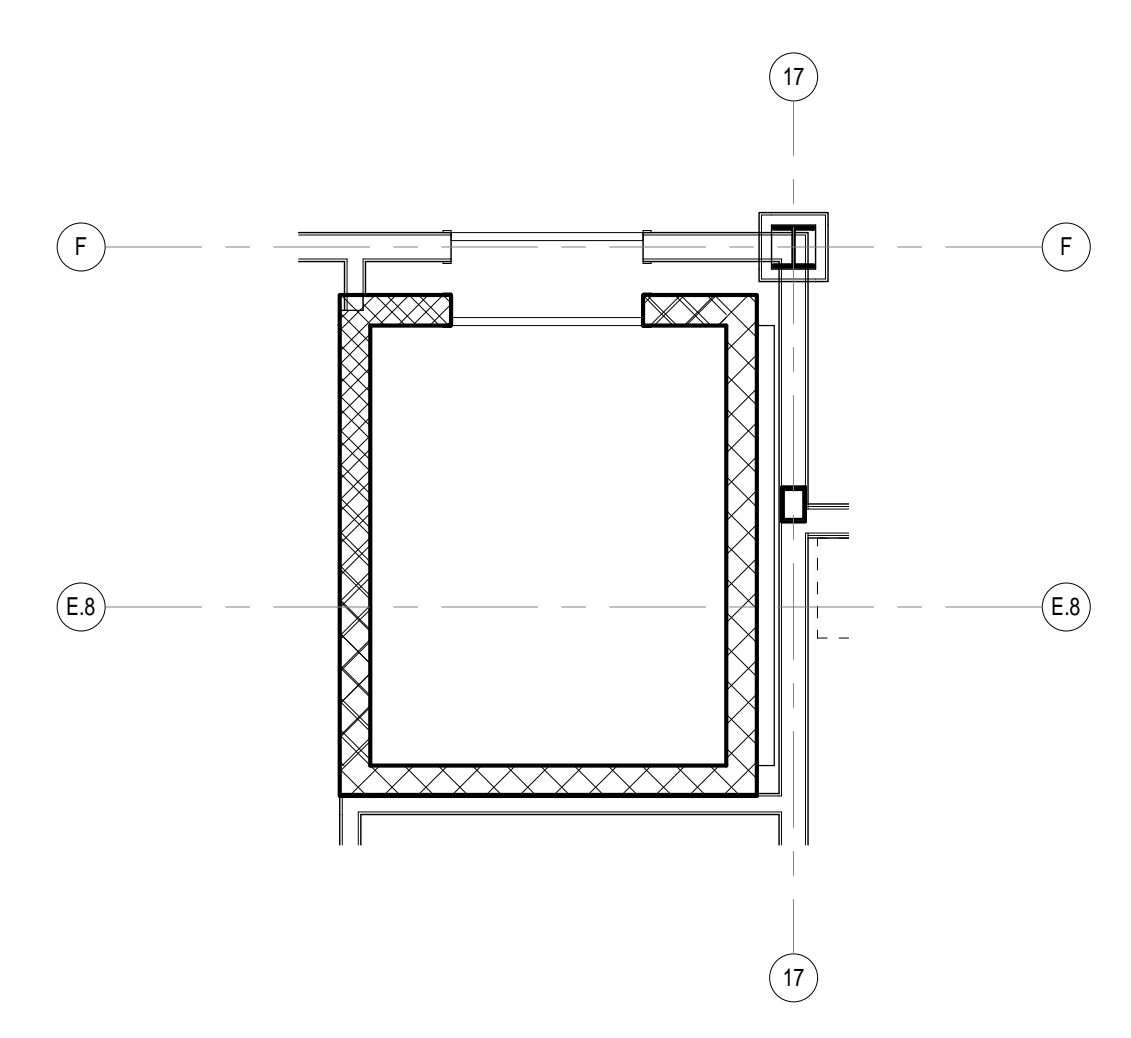
11 Elevator #1 - Second Floor Plan
1/4" = 1'-0"



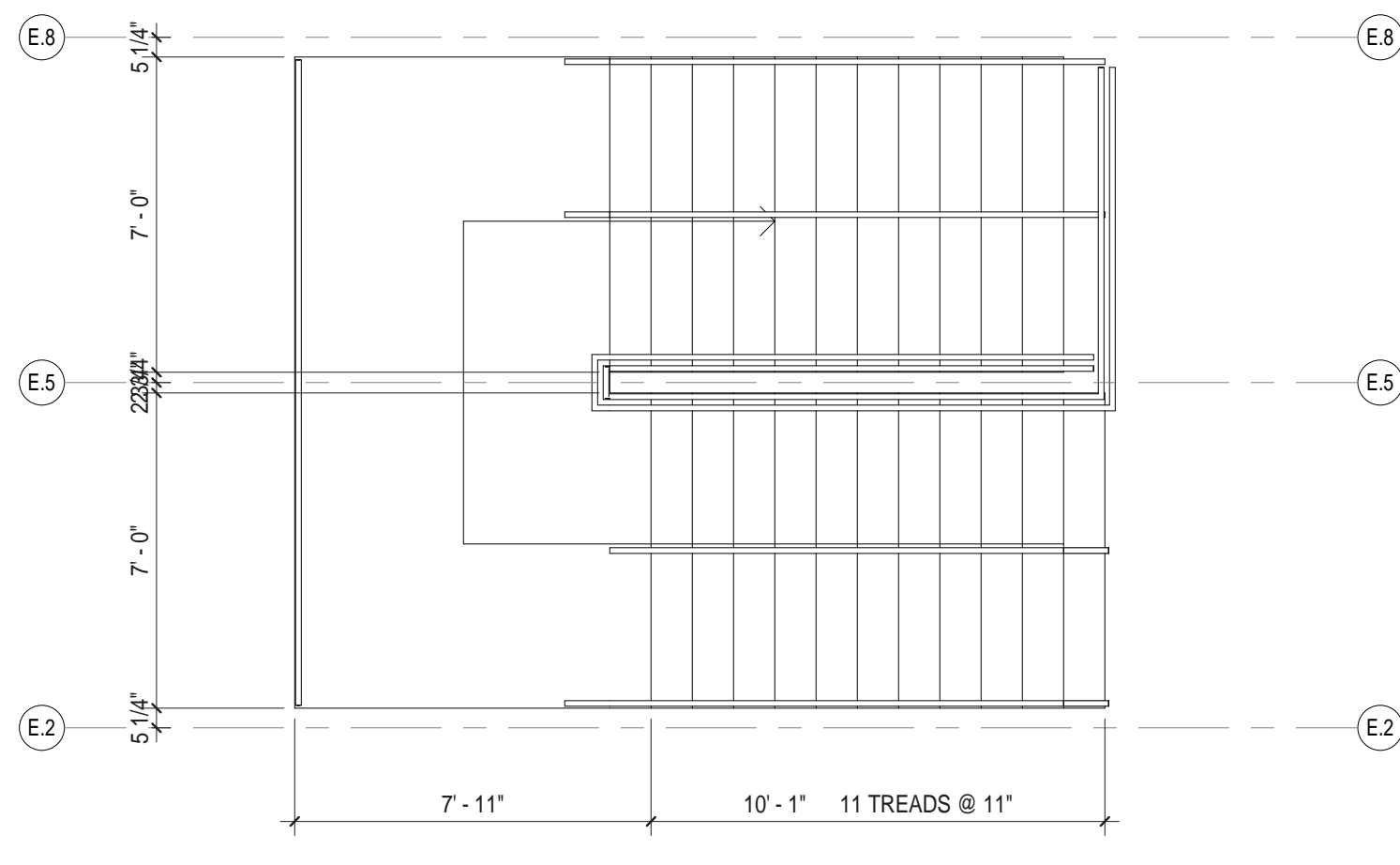
8 Elevator #2 - Second Floor Plan
1/4" = 1'-0"



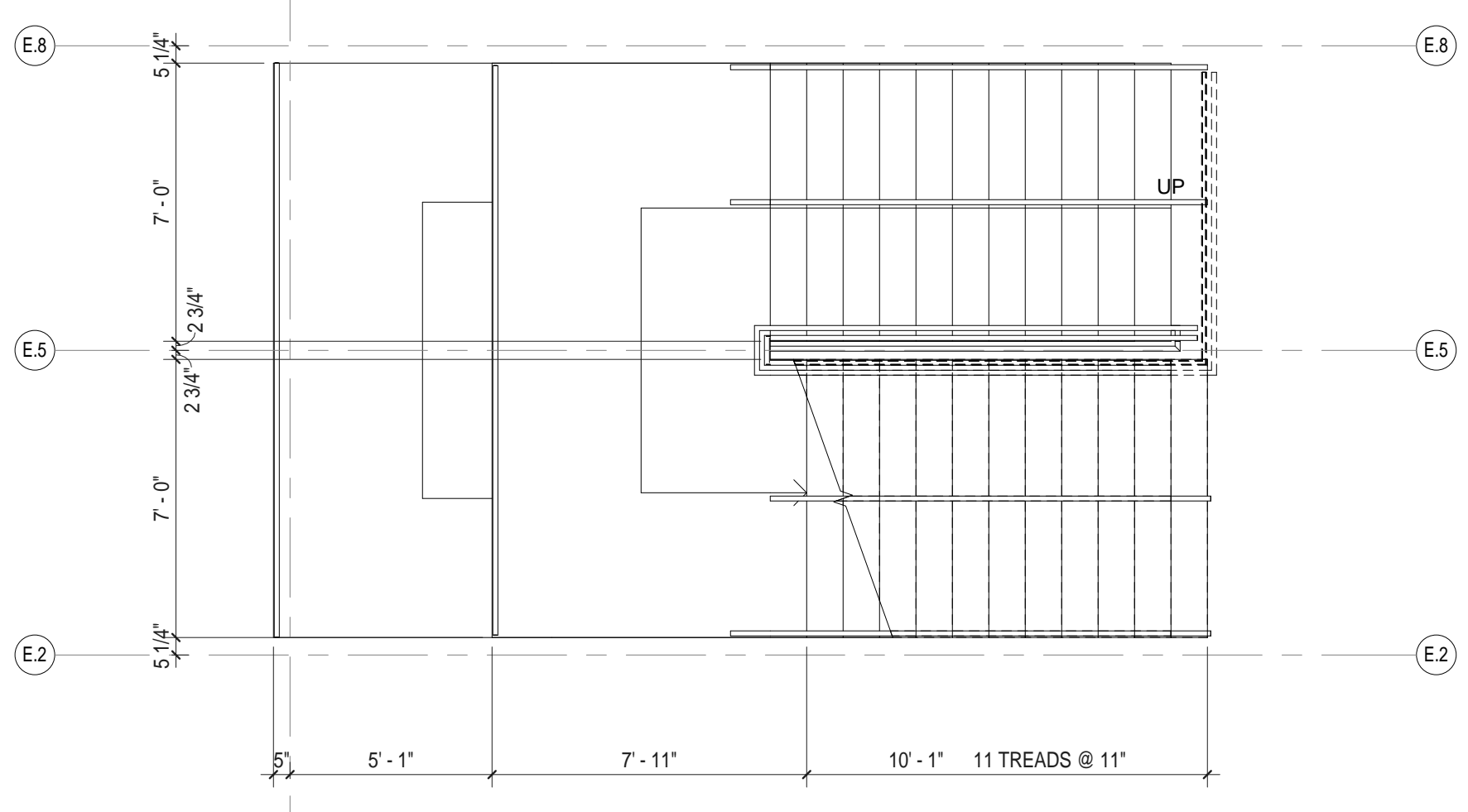
12 Elevator #1 - First Floor Plan
1/4" = 1'-0"



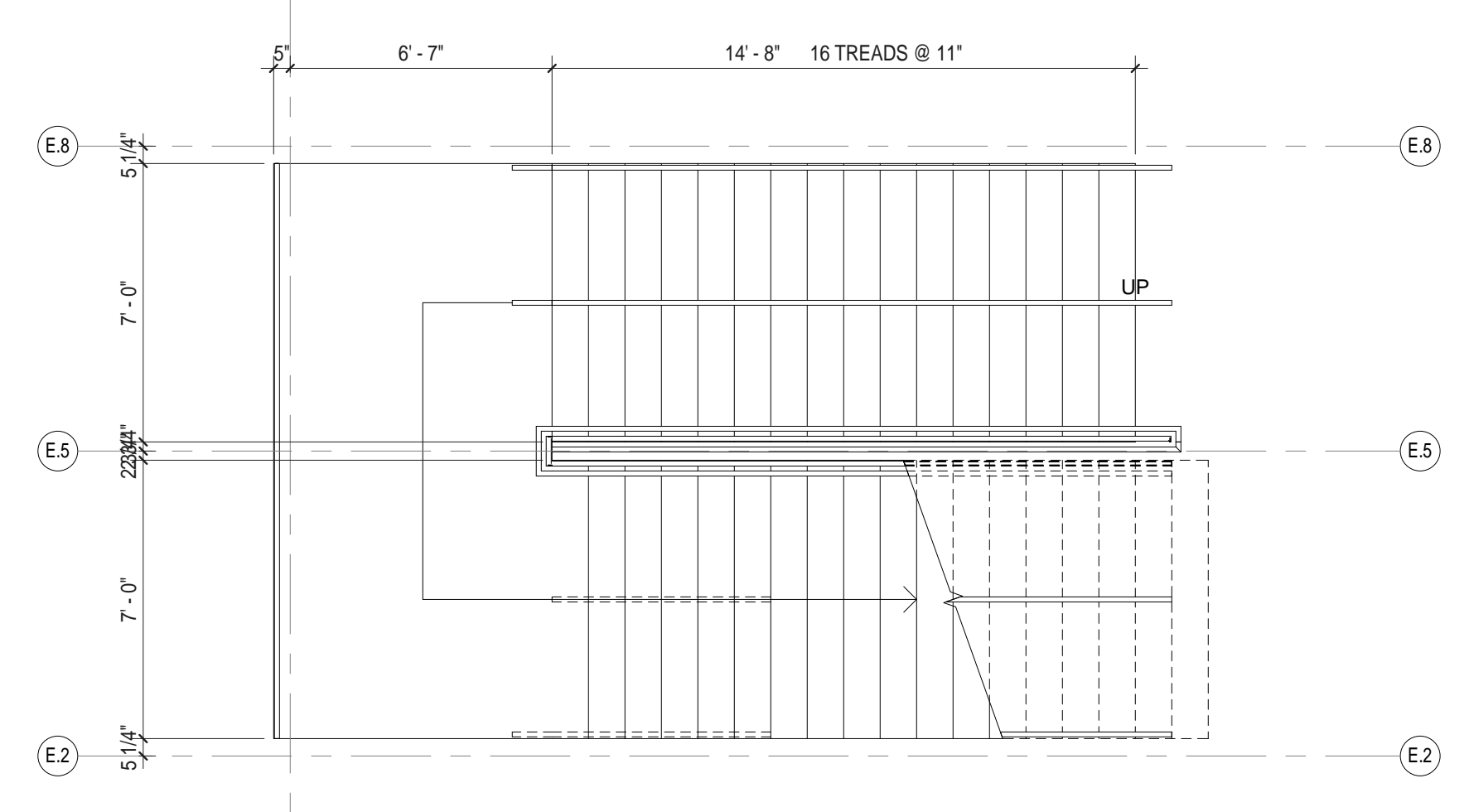
9 Elevator #2 - First Floor Plan
1/4" = 1'-0"



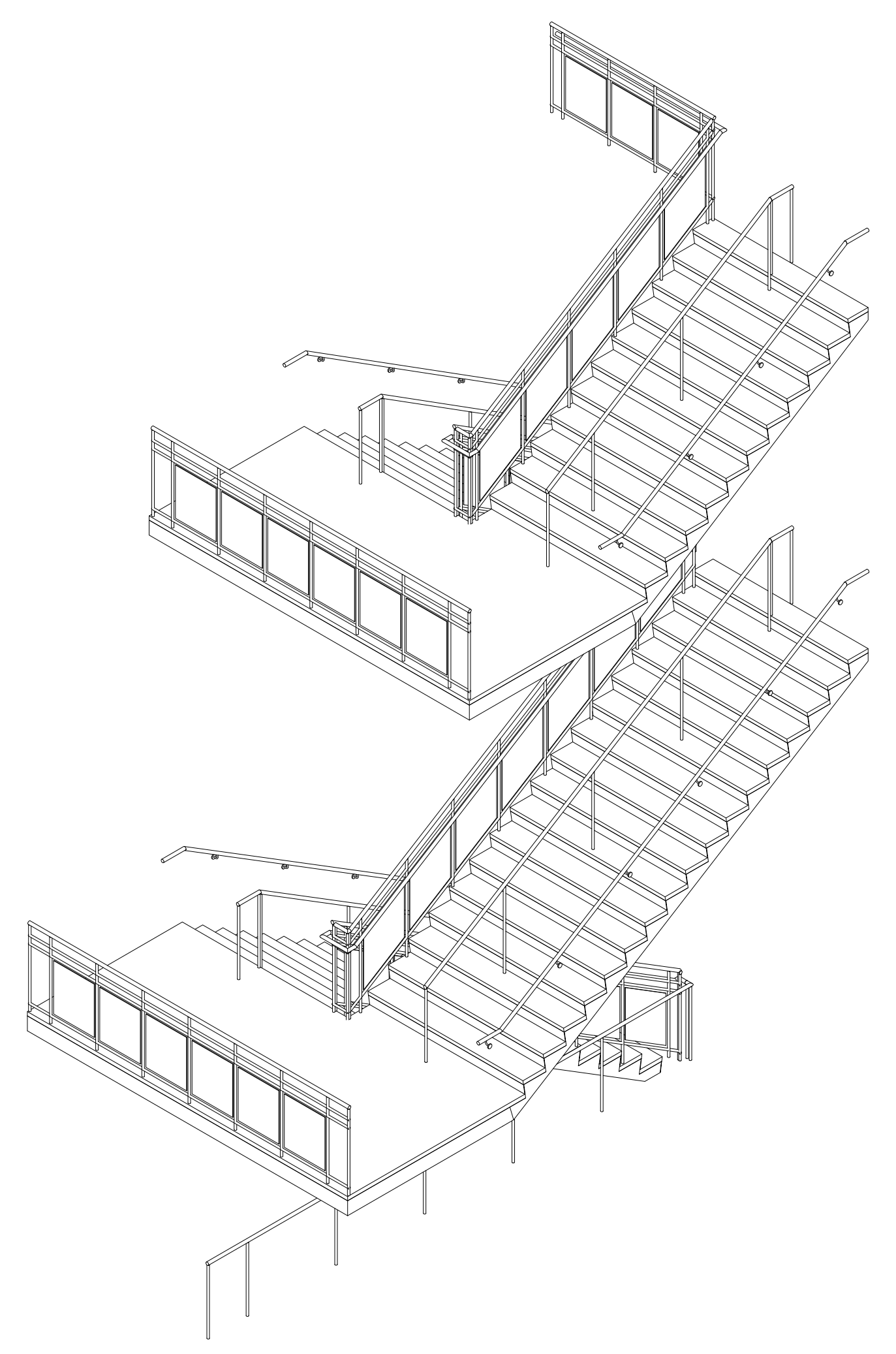
2 End Stair Plan - Fourth Floor
1/4" = 1'-0"



3 End Stair Plan - Third Floor
1/4" = 1'-0"



4 End Stair Plan - Second Floor
1/4" = 1'-0"



1 Axon of End Stair (typ of 2)

C:\Users\jromms\Documents\Concord-Carlisle\HS_Consulting\Drawings\A9.2\A9.2.dwg
8/15/2012 11:28:41 AM
JRF/jrf

Architect:

omrarchitects inc

543 Massachusetts Ave, West Acton, MA 01720
www.omr-architects.com t: 978.264.0160

Consulting Engineer:

Registration:
Design Development Submission

Project Name and Address:

Concord-Carlisle Regional High School

500 Walden Street
Concord, MA 01742

Issue Submissions:

No.	Date	Description
1	8/15/2012	Design Development Submission

Title:

**Stair at East and West Ends
Elevator Plans**

Date: August 15, 2012 Scale: 1/4" = 1'-0" Drawn: JRF Checked: jrf/jrs

Project No.: 1102.00
Drawing No.: **A9.2**
© omr architects inc